



**Hospira Medical UK Ltd**

# Company Profile

Hospira Medical UK Ltd. Specializes in developing and marketing of Covid-19 Medical Protective Equipment, PPE, oxygen concentrator and other healthcare related products. All of our products are FDA/CE certified in accordance with US/EU certification. We also have a perfect quality management system, excellent sales services, and offer our clients pleasant shipping services. Hospira UK is a subsidiary of Pfizer, the leading manufacturer of Pfizer-BioNTech COVID-19 vaccine.

## Part 4 / Covid-19 Test

# CONTENTS

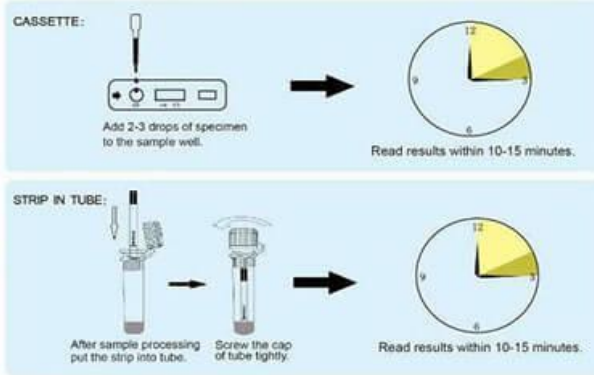


## How Does COVID-19 Ag Test Work?

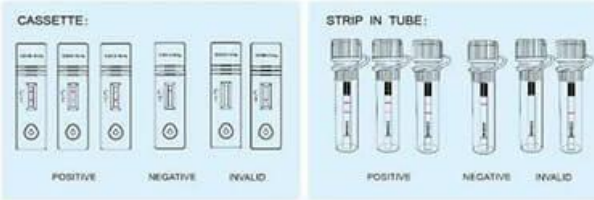
### Specimen Collection



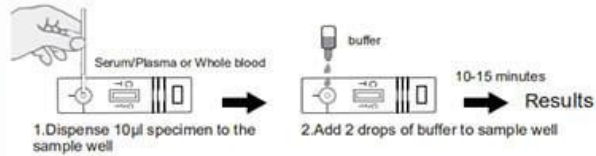
### Test Procedure



### Interpretation of Results

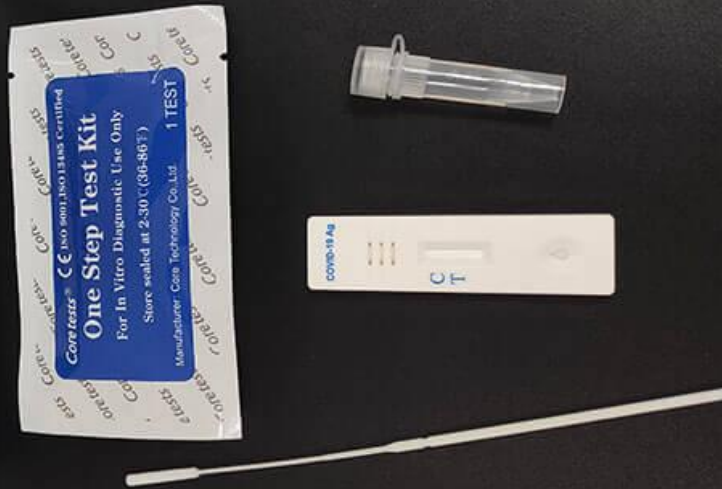
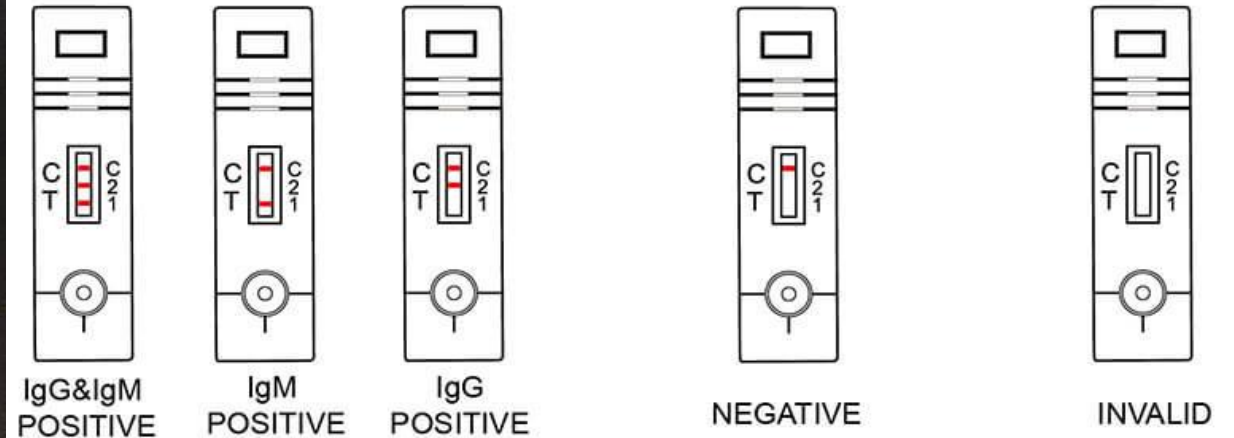


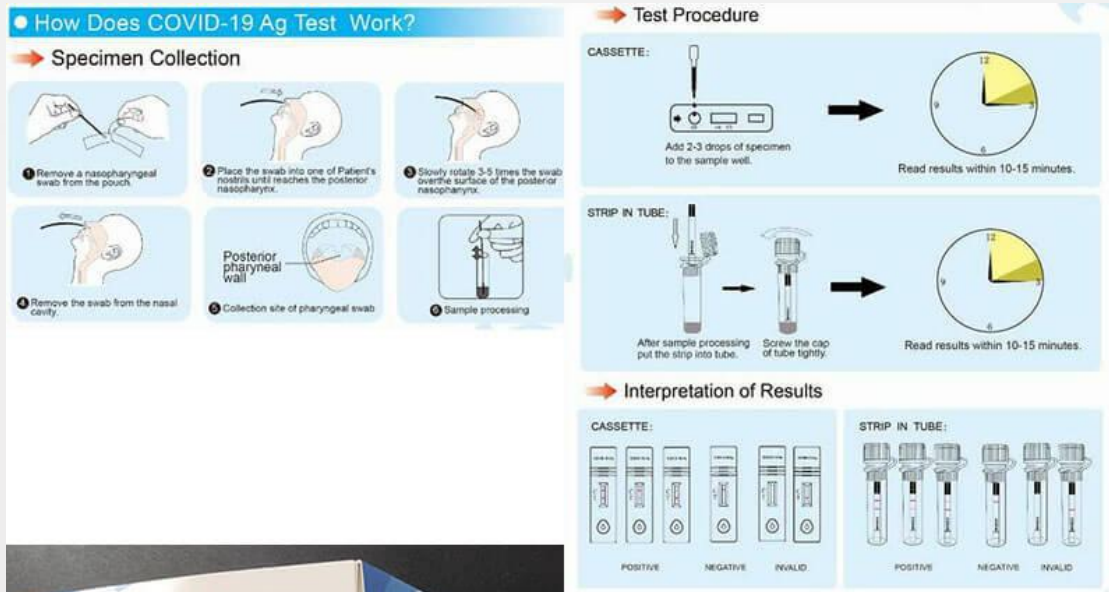
### TEST PROCEDURE



1. Remove the test from the sealed pouch. Lay it on a flat, clean and dry surface.
2. Use the 10µl pipette provided to withdraw the specimen to the marked line. Dispense the specimen to the sample well.

### INTERPRETATION OF RESULT





**Product Name:** Covid-19 Antigen Test Kit

**Specimen:** Nasopharyngeal or pharyngeal Swab

**Detection Time:** 10-15 Minutes

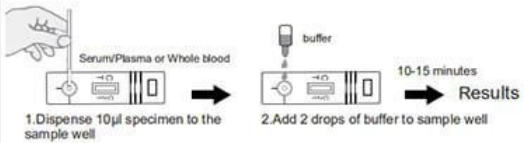
**Read:** Tri-line design; two test lines indicate IgM and IgG infection respectively.

**Result:** Read result within 15 minutes



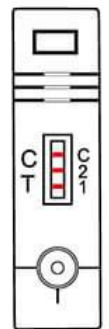


## TEST PROCEDURE

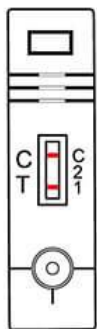


1. Remove the test from the sealed pouch. Lay it on a flat, clean and dry surface.
2. Use the 10µl pipette provided to withdraw the specimen to the marked line. Dispense the specimen to the sample well.

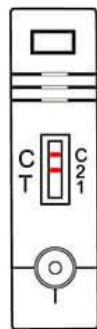
## INTERPRETATION OF RESULT



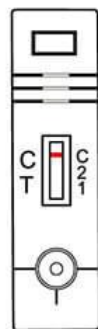
IgG&IgM  
POSITIVE



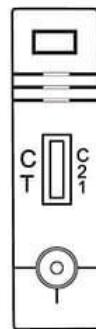
IgM  
POSITIVE



IgG  
POSITIVE



NEGATIVE



INVALID



**Product Name:** Covid-19 IgM/IgG Ab Test Kit

**Specimen:** Serum

**Result:** IgG & IgM positive control line and T1 line & T2 line appear in the test Window.

**IgM Positive:** Two colored lines appear, one is in T1 area and the other line is in Control area.

**IgG Positive:** Two colored lines appear, one is in T2 area and the other line is in Control area.

**Negative:** Only one line appears in Control Area, No line appears in T1/T2 area.

**Invalid:** If no line appears in the Control area, the test results are invalid regardless of the presence or absence of line in the test area. The direction may not been followed correctly or the test may be deteriorated. It is recommended that repeat the test using a new device.

# Hospira Medical UK Ltd



Website: [www.hospiramedical.co.uk](http://www.hospiramedical.co.uk)

E-mail: [info@hospiramedical.co.uk](mailto:info@hospiramedical.co.uk)

Mobile/Whatsapp: +44 192 695 5390